
INTERNATIONAL RESOURCE CENTRE ON INCLUSIVE EDUCATION & CBR

FEBRUARY 10TH 2022

A FACT Sheet An initiative
of CBR NETWORK,
Bangalore ,India

Inside

- 1.SDG Goal 4 –Chapter 6 NEP 2020- Key highlights
- 2.Social security for persons with disabilities update
- 3.Who wants CBR?

I.SDG GOAL 4 –KEY HIGHLIGHTS

Ensure inclusive and equitable quality education and promote lifelong learning opportunities for all

Click here to read more <https://sdgs.un.org/goals/goal4>

Target4.1

By 2030, ensure that all girls and boys complete free, equitable and quality primary and secondary education leading to relevant and effective learning outcomes

Indicators

4.1.1

Proportion of children and young people: (a) in grades 2/3; (b) at the end of primary; and (c) at the end of lower secondary achieving at least a minimum proficiency level in (i) reading and (ii) mathematics, by sex

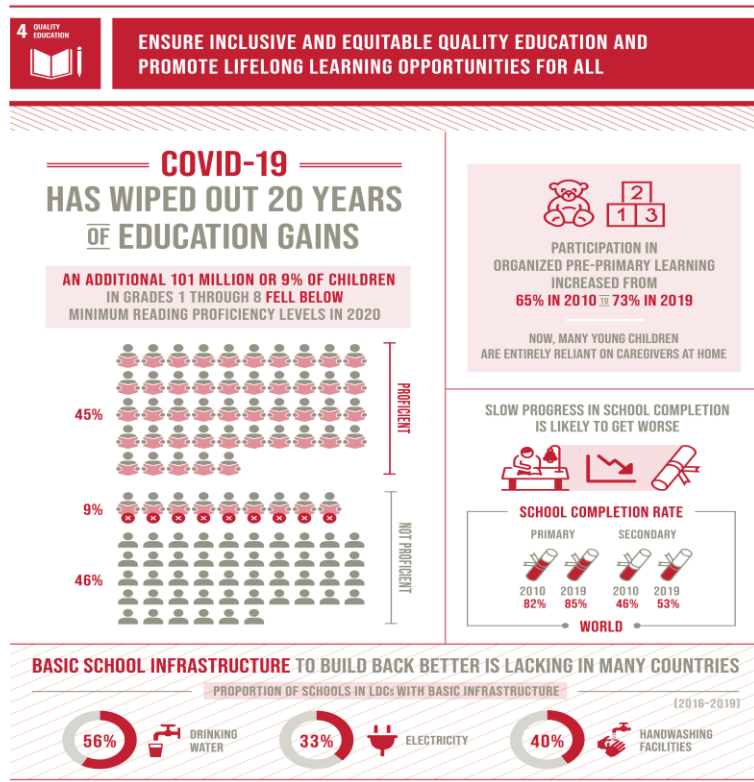
4.1.2

Completion rate (primary education, lower secondary education, upper secondary education)

4.2

By 2030, ensure that all girls and boys have access to quality early childhood development, care and pre-primary education, that at least two-thirds of five-year-olds are enrolled in

COVID & ITS IMPACT ON EDUCATION_GLOBAL AND NATIONAL FACTS



The pandemic caused further shocks to the system with schools forced to shut down during the lockdown period, and the transition of students and teachers to online teaching-learning. In India, around **250 million** students were affected due to school closures at the onset of lockdown induced by COVID-19.

<https://data.unicef.org/topic/child-disability/covid-19/>

Some underlying health conditions place **children with disabilities** at higher risk for becoming infected with and developing severe illness as a result of **COVID-**

Understanding the impact of COVID-19 ...
- unesdoc.unesco.org.
<https://unesdoc.unesco.org> > ark:

NEP-2020 –EQUITABLE INCLUSIVE EDUCATION

- https://www.education.gov.in/shikshakparv/docs/Anita_Julka.pdf

https://www.researchgate.net/publication/348364008_A_Roadmap_to_Inclusive_Education_in_NEP2020

A Roadmap to Inclusive Education in NEP2020
October 2020

The **NEP 2020** seeks to “ensure **inclusive** and **equitable** quality **education** and promote lifelong **learning** opportunities for all” by 2030.

Union Education Minister Dharmendra Pradhan said that NEP 2020 focusses on providing equitable and inclusive education especially for the socially and economically disadvantaged sections of society

<https://www.education.gov.in/hi/node/3569>

Enabling **Inclusive Education** –
education of Girls, SCs, STs,
Minorities and ... **Indumathi Rao**,
Regional Adviser, CBR NETWORK, Vice
Chairperson.

CBR –SOCIAL SECURITY UPDATES (LESS THAN 50% PERSONS WITH DISABILITIES HAVE ACCESS TO MONTHLY PENSIONS)

GOVERNMENT OF INDIA MINISTRY OF RURAL DEVELOPMENT DEPARTMENT OF RURAL DEVELOPMENT RAJYA SABHA UNSTARRED QUESTION NO. 909 TO BE ANSWERED ON 09.02.2022 SEPARATE PENSION SCHEME FOR DISABLED

909 SHRI ELAMARAM KAREEM: Will the Minister of RURAL DEVELOPMENT be pleased to state: (a) the States that have separate schemes for pensions for the disabled people; and (b) the State-wise data of the beneficiaries and the amount given to individual beneficiaries per month? ANSWER MINISTER OF STATE IN THE MINISTRY OF RURAL DEVELOPMENT (SHRI FAGGAN SINGH KULASTE) (a) & (b): State-wise details are provided in Annexure.

Read more here:

<https://drive.google.com/drive/search?q=type:pdf>

Disability is a state (provincial governments) subject and a PRI (local bodies) subject .

People with disability

Population in India as per census 2011 (2016 updated) Disability Population in India as per census 2011 (2016 updated) – In India out of the 121 Cr population, **2.68 Cr persons are disabled** which is 2.21% of the total population. 56% (1.5 Cr) are males and 44% (1.18 Cr) are females.

As per census 2011, there were **29,63,392 disabled persons** in Maharashtra. Maharashtra is a large state; hence regional variation among the population is also expectedly high. Out of which 12,12,945 are receiving Rs 300 per month pension! According to the 2011 census in Kerala there are about 7,61,843 disabled persons and the male population is 51.81% and female population is 48. Out of which 3,98,279 are receiving Rs 1300 per month!

FOR A-Z INFORMATION ON DISABILITY AND INCLUSION
VISIT US AT

**International Resource Centre on
Inclusive Education & CBR**

<https://www.inclusionbharat.org/>